

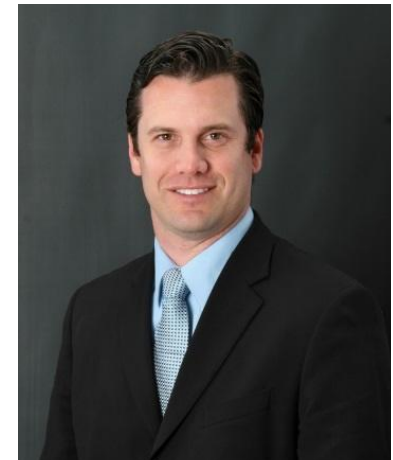


Early Intervention Summit

November 17, 2020

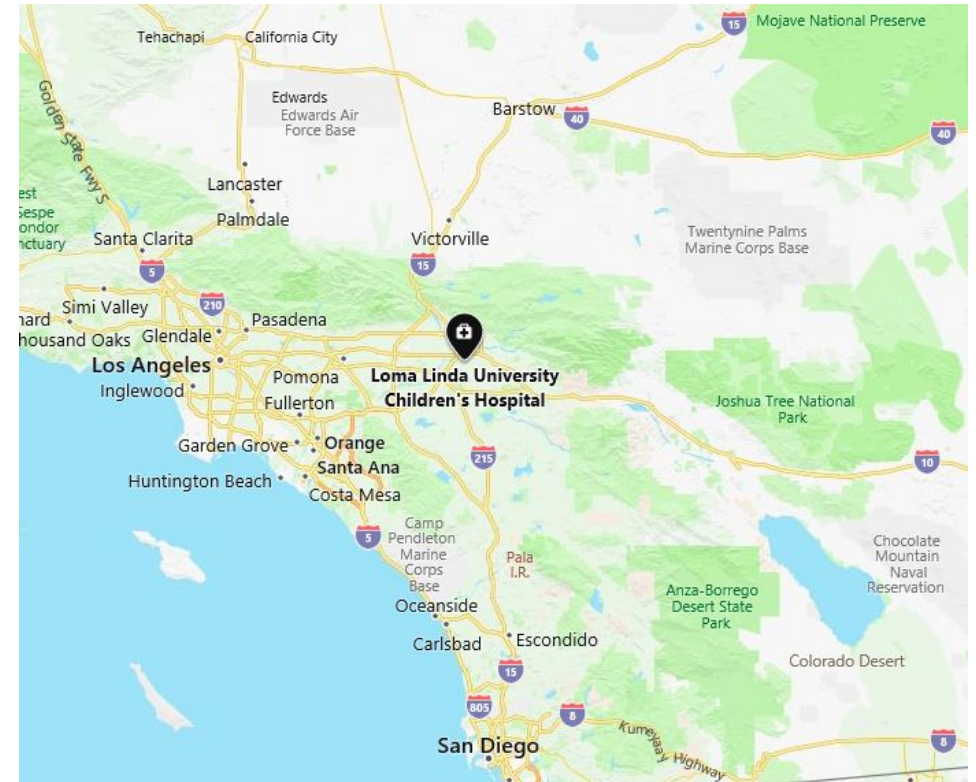
Brett Walls, MBA

AVP of Ambulatory Services, LLUCH



A Strategic Partnership

- First 5 San Bernardino, First 5 Riverside, and Loma Linda University Children's Health
- A privilege to be entrusted with this partnership
- Geography we serve
- Counties partnering on kids going back and forth between bordering counties



Timeline of Partnership - Placeholder

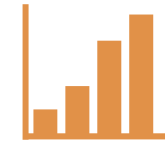


Various
programs
approved

2015

First Early
Intervention
Planning Summit
held in Nov.

2018



Third Early
Intervention Summit
held in Mar.

2019

2014

First
agreement with
HMGIE was
signed

2017

Advisory
Board Kick-off
Meeting in
Nov.

2019

Second Early
Intervention
Planning Summit
held in Jan.

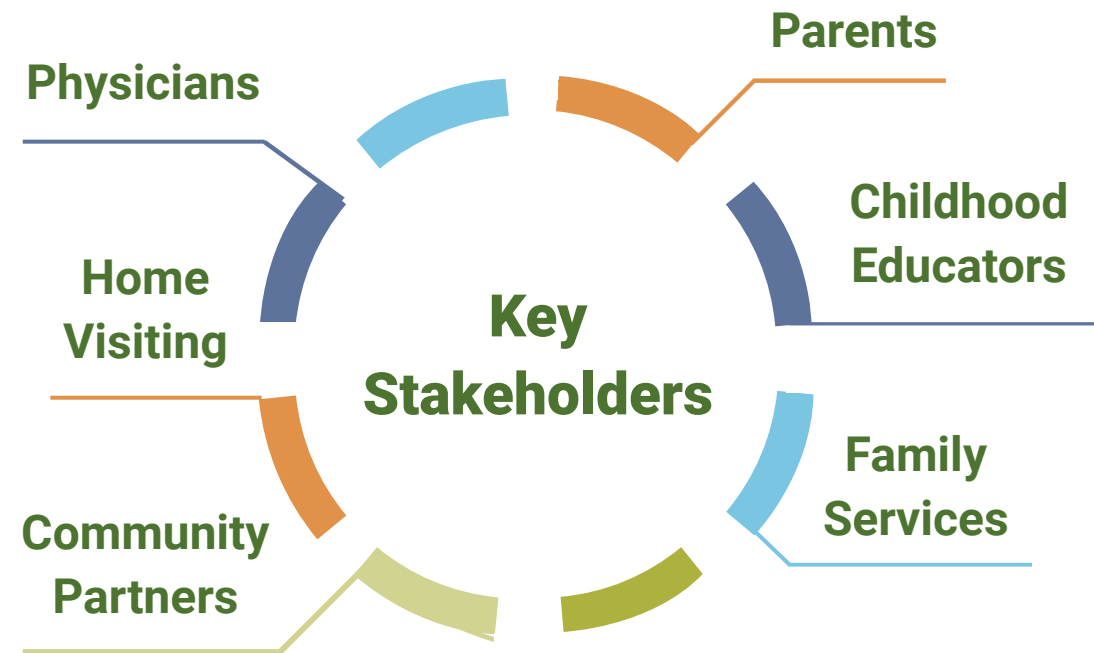


2020

Call Center
implementation

Stakeholder Engagement

- History of seeking input from HMGIE stakeholders
- Three Early Intervention Summits took place
- Design Committees: Systems & Sustainability, Child Health Provider Outreach, and Community & Family Outreach
- We continue to garner input for what the future of HMGIE should be



Future Possibilities



Dental Transformation Initiative (DTI) Screeners

- Embed in EPIC a dental screening tool for the community to use
- Community resources are already performing dental screenings



Regional Neonatal ICU Embeds

- Connecting families in the NICU with resources in their community
- Currently using Ages & Stages Questionnaire (ASQ3) and evaluating ASQ4
- Linking of social determinants of health in EPIC, wellness map, and Aunt Bertha

MVP/EPIC Solution on the Horizon

Almost ready to launch a minimum viable product (MVP) tech solution that will enable:

- Ages & Stages Questionnaire
- Social determinants of health
- Wellness wheel that will connect to resources (Aunt Bertha)





Marti Baum, MD, FAAP

Physician Lead Help Me Grow Inland Empire
Medical Director Community Health Development
Loma Linda University Health
Social Action Community Health System

Why Do We Care?

Why the Early Intervention is necessary in CA?

Why the ***"Now"*** is so important?

Help Me Grow Inland Empire with community
provides

the ***"How"*** ?

Developmental Testing

Early Intervention Services

“Speech and Language”

Age of Identification	Age 3	Age 6	Before K Identification
California 51 of 58 counties			
2016-17	12,797	21,944	54.4%
2017-18	12,706	22,980	55.3%
2018-19	13,028	23,784	54.8%
San Bernardino County 39th/51			
2016-17	564	1,476	38.2%
2017-18	646	1,608	40.2%
2018-19	638	1,662	38.4%
Riverside County 31st/51			
2016-17	689	1,652	41.7%
2017-18	606	1,737	34.9%
2018-19	711	1,790	39.7%



One in four (28.1%) children under the age of 6 in California are at moderate- or high-risk for developmental, behavioral, or social delays.

One in four (28.5%) children in California receive timely developmental screenings.



40% of parents with children age 5 and younger report having concerns about their child's physical, behavioral, or social development.

37% of families with dual income drop to single income when a child is diagnosis with a significant developmental delay

Response to Problem

.....*Early intervention*



AAP recommending developmental testing once per year up to age 0-36 months



National Help Me Grow strategy addressing developmental testing and coordination.

Affiliates 50% states, 45 counties in CA.



Local SBC and RC First 5 approached LLUCH for Collective impact coordination for 400,000 children, 0-5 yr.

12% 0-5y in California, live in SBC and RC

Social Determinants of Health

Social Determinants of Health

World Health Organization - 1990



Social Determinants of Health



Physical Environment

Air Quality

Food

Water

Housing

Built Environment

Social Environment

Economic System

Behavioral Health

Education

Health

Social Support

Policy and Law

Social Determinants of Health

- What we know about patients is what we ask
 - Collect address of patient
 - Collect insurance information of patient
 - Collect demographics of families
 - Collect vaccine information
 - Collect birth history
 - Collect past medical history
 - Collect interval, past, chronic history
 - Collect medication lists



- We do not ask questions that we do not have answers for



Help Me Grow
Inland Empire



Housing as Health

16% increase
homelessness
in Los Angeles
County

25%
higher rates of
depression as
adults....
BEHAVIORAL
RISK

23% increase in
San Bernardino
County

2x more likely
to repeat a
grade
ACADEMIC
RISK

Lower math
and reading
scores....
COGNITIVE
RISK





Food As Health



FOOD INSECURITY



Pilot 1 - Clinic

Riverside University Health System – Attendings, residents

Social Action Community Health System – Attendings, residents

“Help Me Grow IE” - Team

Assigned Surveys through electronic surveys pre-visit completion

- ❑ Ages and Stages Questionnaire (ASQ 3)
9 mo 18 mo 24 or 30 mo
- ❑ Social Determinants of Health through EPIC EHR “PRAPARE”

Pilot 1 – Clinic

ASQ 3 Development 5

Communication

Gross motor

Fine motor

Problem solving

Personal Social

Social Determinants of Health 10

Food Housing

Financial Stress

Transportation Physical activity

Isolation Smoking

Intimate Partner Abuse

Alcohol/Substance

Pilot 1 – Clinic

ASQ and SDOH

ASQ	%		SDOH +	%
Typical	15%		Typical	Mild 40%
Monitor	21%		Monitor	13%
Refer new	41%		Refer	31%
known	21%			

Pilot 2 – In Hospital

Pilot Physicians – Lead - Marti Baum, MD

Pediatric Attending – 2 project lead physicians, 7 team lead physicians

Residents – 5 lead residents, additional students and interns

Social Worker = Lead - Mayra Benitez and 6 social workers

“Help Me Grow-IE” Team – Ron Stewart and 2 community resource navigators

Loma Linda University Children’s Hospital – CEO, CMO, Brett Walls, AVP

“100 Sequential In Patients – Social Determinants of Health”

Team D – All patients

Pilot 2 – In Hospital

Financial Risk	%	Food	%	Transport.	%	Physical Activity	%	Stress	%	Isolation	%
58	62	56	60	85	90	30	34	56	63	20	24
20	22	1	1	0	0	47	54	1	1	64	74
15	16	36	39	9	10	10	12	32	36	2	2
	38		40		10		66		37		76



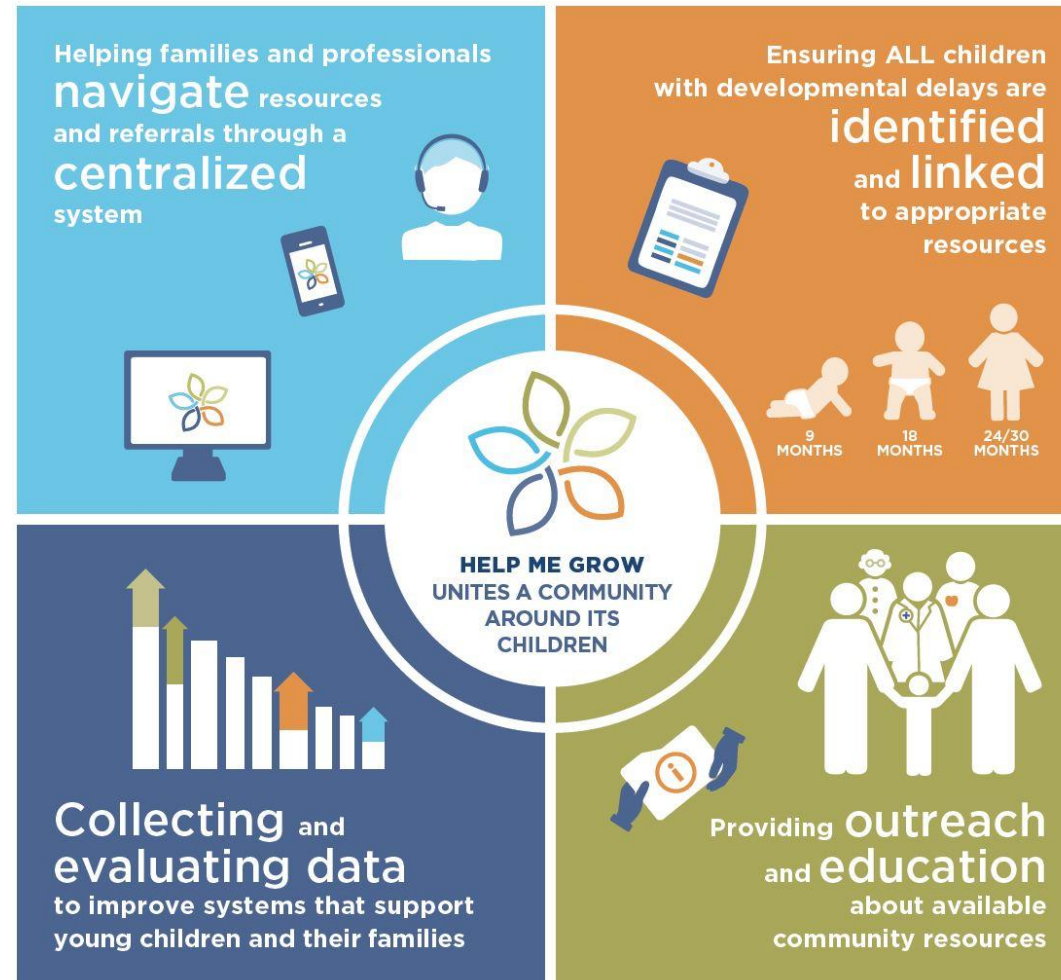
Help Me Grow
Inland Empire

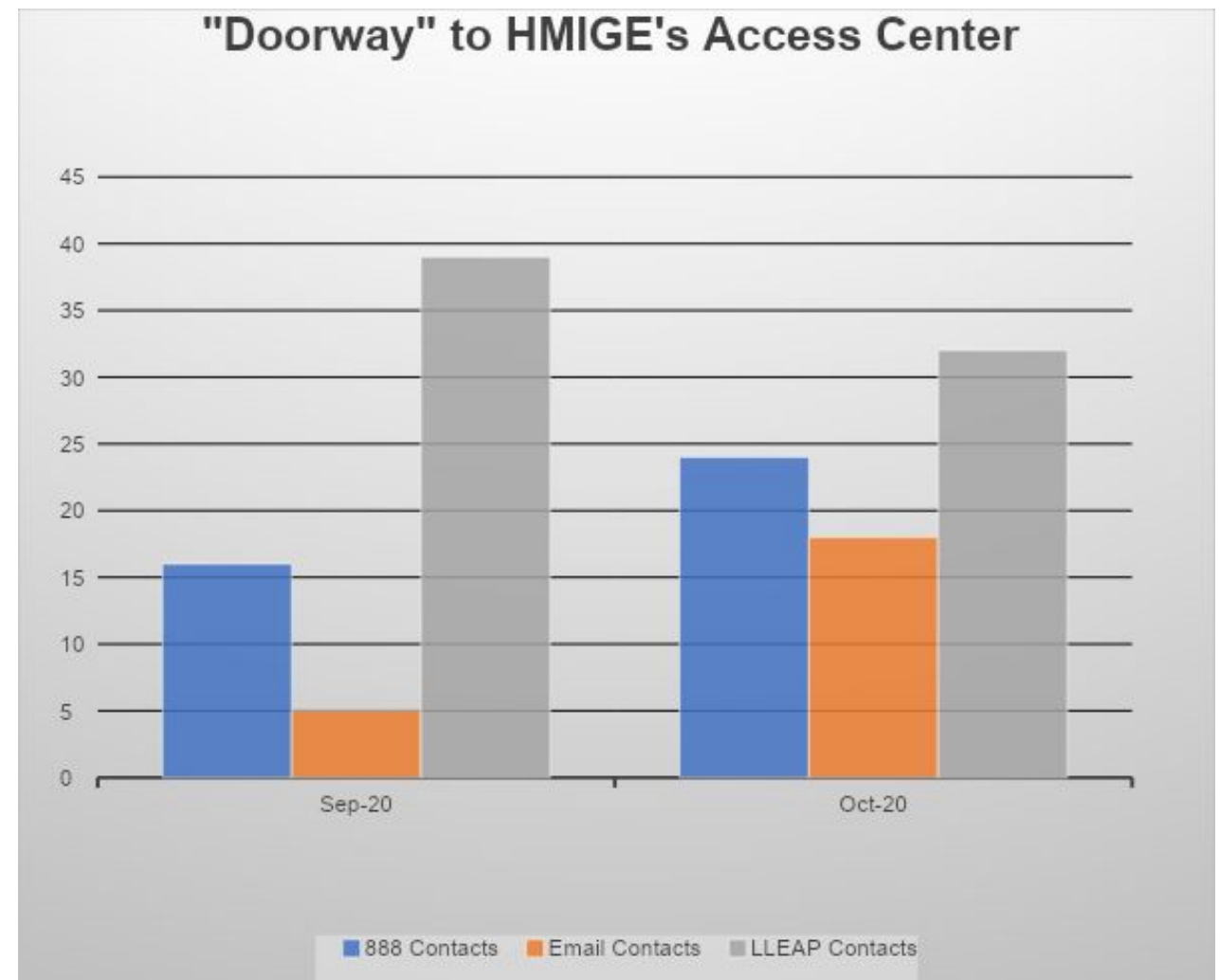


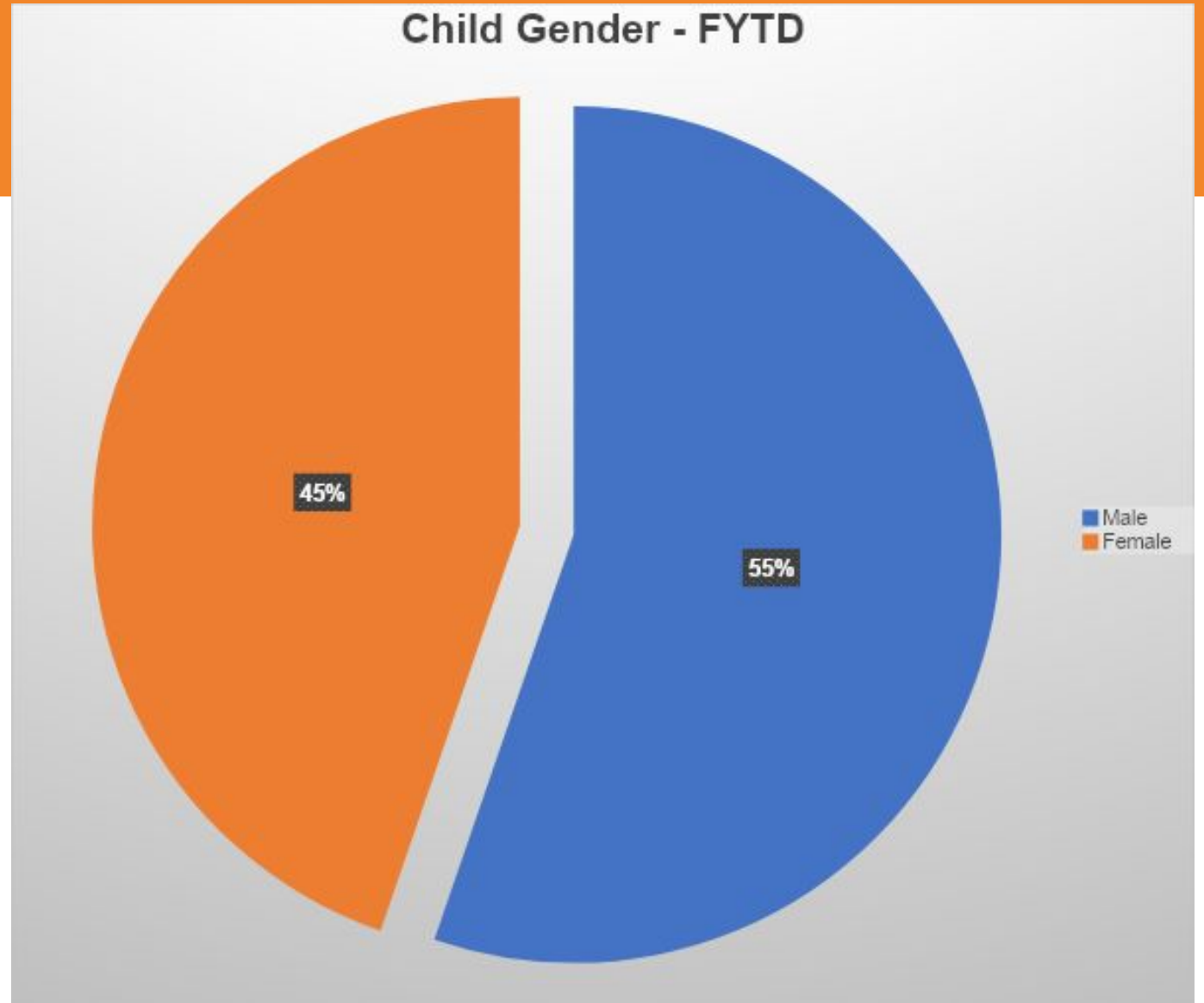
Ronald Stewart, PhD

Help Me Grow Inland Empire
Program Manager

The Help Me Grow Approach

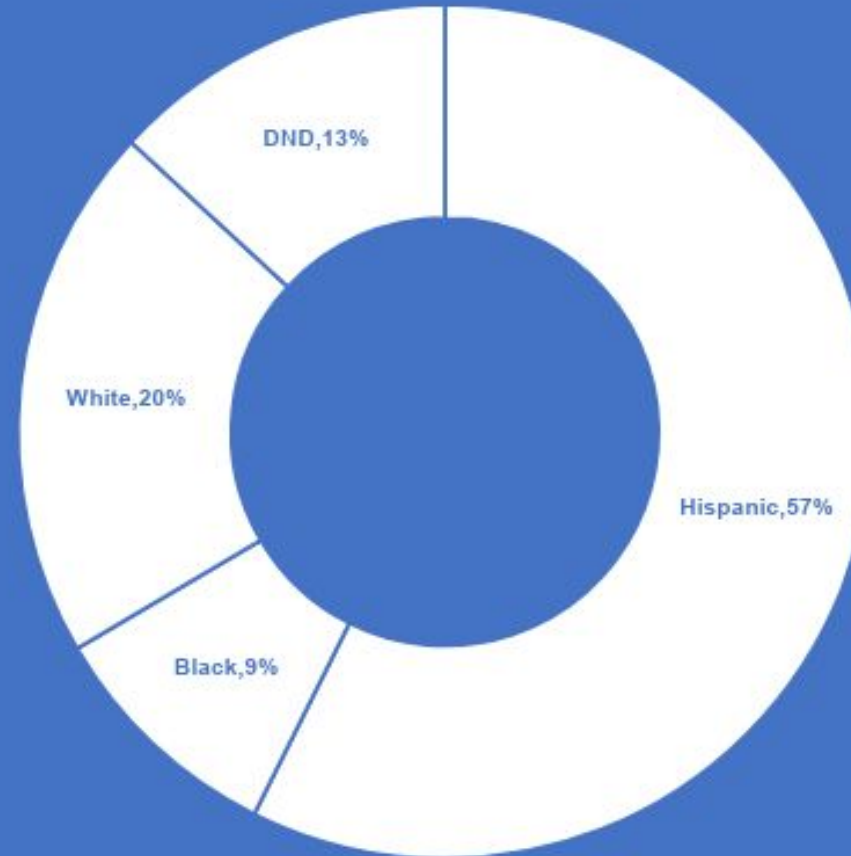








Child Race FYTD



1.888.464.4316 (Access Center)
www.HelpMeGrowIE.org



Help Me Grow
Inland Empire



LOMA LINDA UNIVERSITY
CHILDREN'S HEALTH

