

Help Me Grow Inland Empire Early Intervention Summit




February 6, 2019



Welcome back!



Why We're Here Today

-  To continue learning from each other
-  To learn from other counties
-  To develop our shared vision



Help Me Grow is most successful when the community collaborates.

What will be your role?



Barbara Alejandre

Executive Director, Chief Intergovernmental Affairs
Officer, San Bernardino County Superintendent of
Schools



Early intervention matters.

Catching and treating developmental delays early can
have a life-changing impact for children and families.




Why Help Me Grow?

 Early identification and intervention can make all the difference for K-12 success

- Students are better prepared
- Decreased need for special education



Why Now?

 The time is ripe to build the Inland Empire's early intervention system:

- Prepared to take advantage of state investment
- Build on past community successes





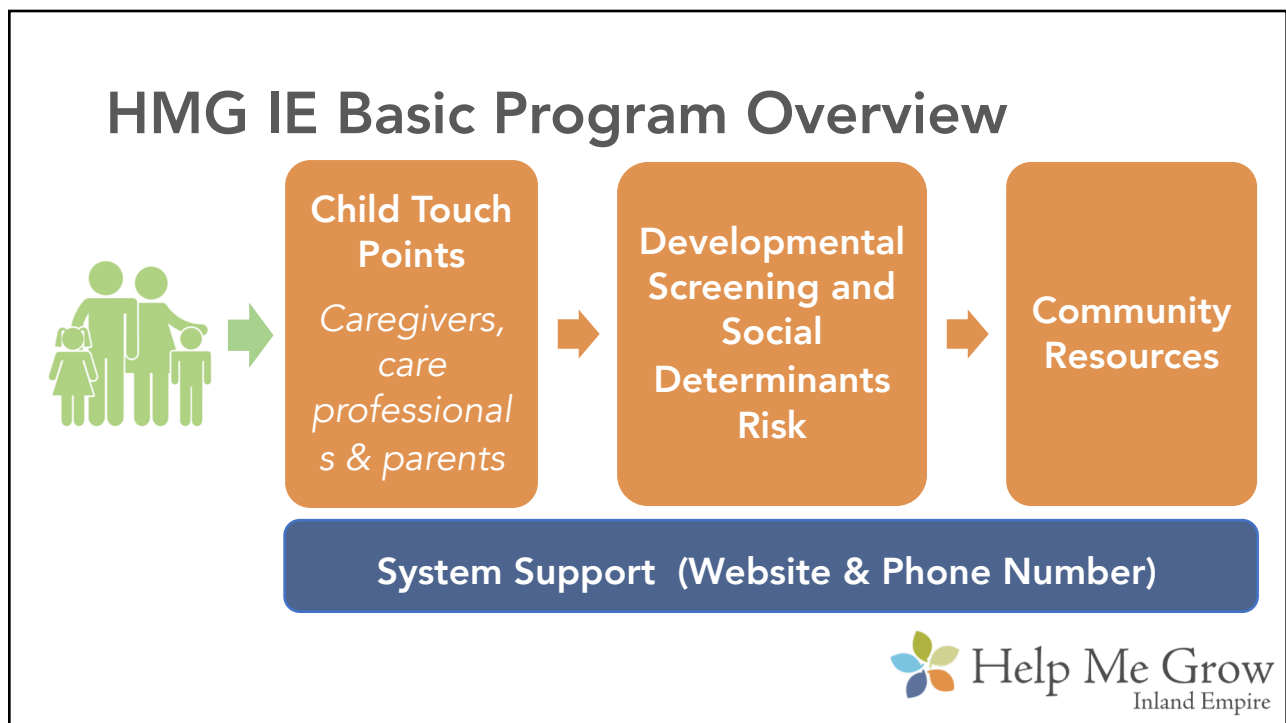
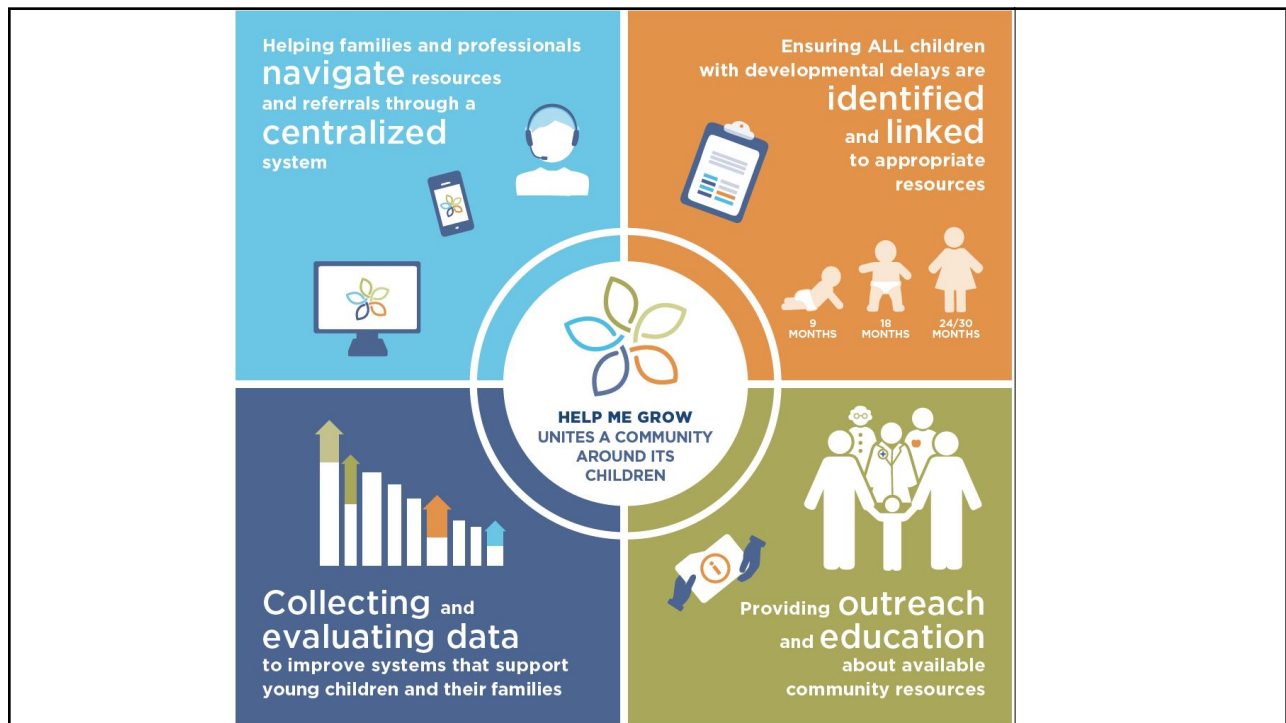
As cross-county
partners working
together, we can
increase our impact for
children in the Inland
Empire.



The Help Me Grow difference

Help Me Grow unites a community around its
children to ensure universal early identification.





Today's Agenda

-  Welcome and Opening Remarks
-  Mining the California Help Me Grow Experience: CA County Representatives Panel
-  Designing Help Me Grow Inland Empire: Targeted Discussions
-  Capturing the Vision of Help Me Grow Inland Empire
-  Closing Comments and Next Steps



Strategic Planning & Model Development

November 2018
Summit #1



Kick-Off Strategic Planning
Understand Landscape

February 2019
Summit #2



Establishing Priorities
Building & Learning
From Existing Efforts

March 2019
Summit #3



Committee Cross-Sharing
Timeline & Phasing

April 2019



Strategic Plan
Finalized

FY 2019-2020




Help Me Grow IE
Services Launch




HMG-IE Model Development



 Working Committees

 Infrastructure Development

 Defined Operational & Governance Structure

Strategic Planning & Model Development

November 2018
Summit #1



Kick-Off Strategic
Planning
Understand
Landscape

February 2019
Summit #2



**Establishing Priorities
Building & Learning
From Existing Efforts**

March 2019
Summit #3



Committee Cross-
Sharing
Timeline & Phasing

April 2019



Strategic
Plan
Finalized

FY 2019-
2020




Help Me
Grow IE
Services
Launch



HMG-IE Model Development



 Working
Committees

 Infrastructure
Development

 Defined Operational &
Governance Structure



Mining the California Help Me Grow Experience

Juliana Sanchez, HMG Community Liaison, First 5 Alameda County

Kristina Hernandez, Program Coordinator, Early Intervention Help Me Grow,
Office of Fresno County Superintendent of Schools

Cristina J. Peña, Senior Program Officer, Health Systems Department, First 5 LA

Pradeep Gidwani, MD, MPH, Medical Director of HDS and First Steps,
American Academy of Pediatrics, California Chapter 3

Crystal Nava, Developmental and Behavioral Health Director, FIRST 5 Santa
Clara County

Sharon Elmensdorp, PhD, BCBA-D, Developmental Specialist, Landon Pediatric
Foundation/Help Me Grow Ventura County



Juliana Sanchez

HMG Community Liaison,
First 5 Alameda County



Planning: Alameda County

 Became a HMG affiliate in 2011

 Planning Timeline

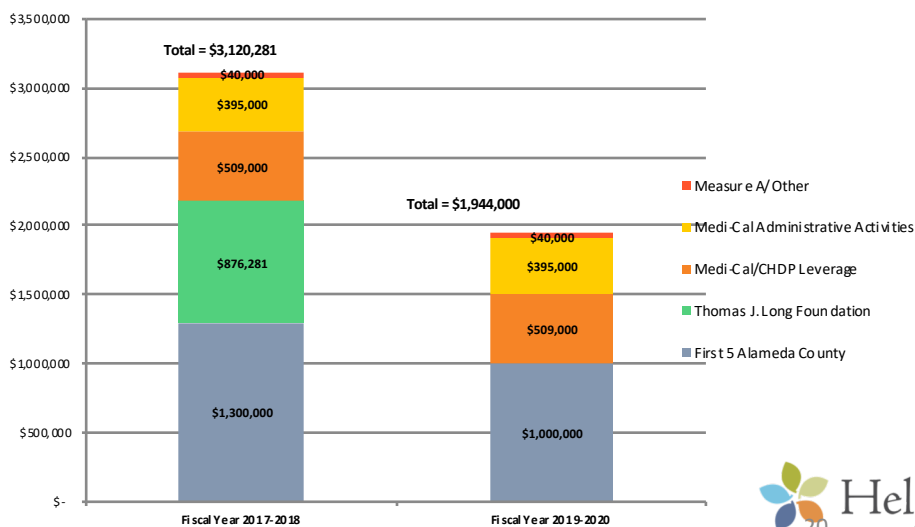
- 2007: First 5 funds formal planning process for a "SART" system (SART = Screening, Assessment, Referral and Treatment)
- 2009-2011: SART three-year pilot begins
- 2012: Renamed SART to Help Me Grow
 - Finalized the revised scope of work, under the HMG model
 - Established the HMG Community Liaison position



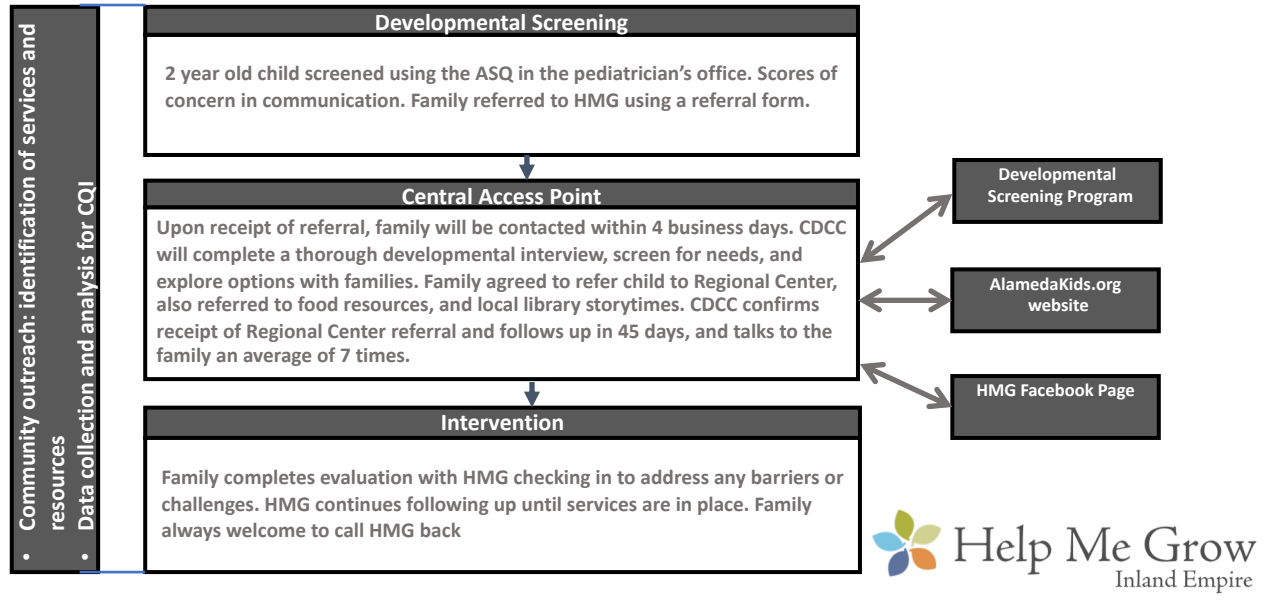
Lead Agency & Partners: Alameda County






Direct Investments & Leveraged Funds: Alameda County



Help Me Grow Model: Alameda County



Bright Spots: Alameda County

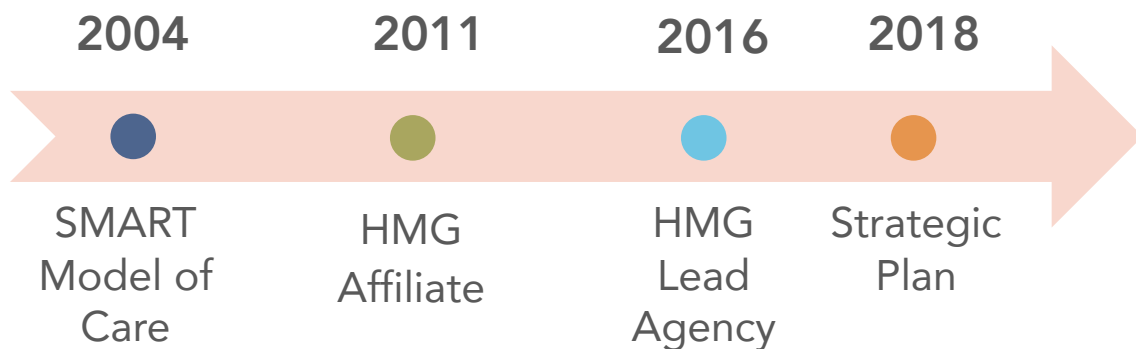
-  94% of surveyed families would recommend HMG to a family members, friend or neighbor
-  93% of families report an increase in their confidence as a parent
-  89% of families report being referred to or linked to services that met their needs

Kristina Hernandez

Program Coordinator, Early Intervention Help Me Grow
Office of Fresno County Superintendent of Schools




Planning: Fresno County



Partnerships: Fresno County

 **Organizing Entity:** Fresno County Superintendent of Schools

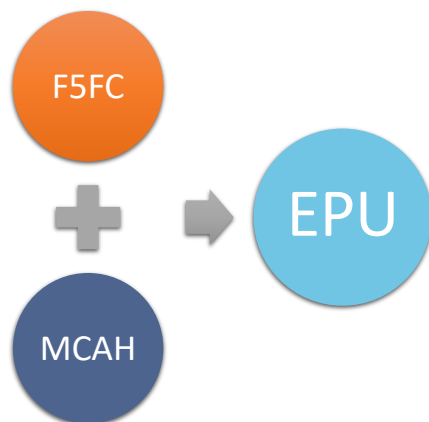
 **Centralized Access Point:** EPU Children's Center

 **Leadership Team:** Resource and Referral - Regional Center -
EPU First 5 - Behavioral Health - Public Health - Social Services
- Office of Education - Head Start - Early Head Start - Fresno
Unified School District - Clovis Unified School District - Valley
Children's Healthcare

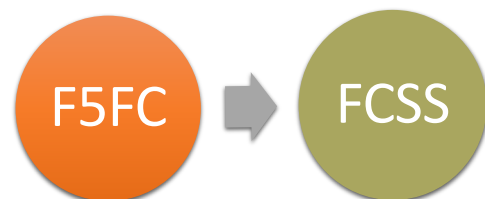


Funding: Fresno County Fiscal Year 2018 - 2019

 **Centralized Access Point**



 **Organizing Entity**






Cristina J. Peña

Senior Program Officer, Health Systems Department
First 5 LA




Planning: Los Angeles County

-  **Currently:** Installation Phase
-  **May 2016-Sept 2017:** Early Planning and Design Phase
-  **Fall 2017-July 2018:** Partnership with Los Angeles County Department of Public Health (LACDPH) to serve as the HMG-LA Organizing Entity
-  **July 2018-Present:** Installation Phase



Partnerships: Los Angeles County

 **Core partners:** American Academy of Pediatrics—Chapter 2; L.A. Care Health Plan; LACDPH, First Connections grantees, etc.

 **Implementing agencies:** First 5 LA & LACDPH



Funding: Los Angeles County

 **First 5 LA:** Funding commitment for 5 years

 **LACDPH:** In-kind personnel and leveraging California's Medicaid State Plan (Title XIX)



Model: Proposed HMG-LA Vision

 HMG-LA Recommendation Report: Promoting Young Children's Optimal Development proposed:

- "Centralized-Decentralized" approach for HMG-LA
- Centralized/countywide: HMG-LA website platform, call center, messaging and educational material, etc.
- Decentralized/regional: Service delivery, including screenings, case management, care coordination and trainings



Bright Spots: Los Angeles County

 In Progress: HMG- LA Demonstration Communities

- Strengthen and expand referral pathways across the early identification & intervention continuum via technology, infrastructure and practice change
- Test practices to more accurately match and link children at risk and with delays to appropriate services and supports
- Overlap with L.A. County's 7 Regional Center catchment areas = countywide reach



Pradeep Gidwani, MD, MPH

Medical Director of HDS and First Steps
American Academy of Pediatrics, California Chapter 3



Planning: San Diego County

Our Model – Healthy Development Services – is a treatment service model that shares some of HMG's functions



Launched January 2006



18 month planning process included the following sources:

- Commission's Strategic Plans
- National studies on child and behavioral health
- Policy briefs and reports
- Local experts key informant interviews and focus groups
- Use of evidence based practices



Recommended creating a comprehensive developmental and behavioral system of care for children 0-5 to address the continuum of children's needs



Partnerships: San Diego County



Core partners:

- First 5 San Diego (Funder)
- AAP-CA3 (Countywide Coordination and Support)
- Harder & Co (Eval)
- 4 Regional Services Lead Organizations



Lead agency:

- AAP-CA3 and 4 Regional Services Leads






Funding: San Diego County



HDS is funded by First 5 San Diego





Help Me Grow Model: San Diego County

-  Our referral sources are pediatricians, ECE providers, community partners and parents who have received services
-  Our Regional Services Lead Organizations provide screening, assessment, referrals, and treatment
-  Referral sources are kept in the loop



Bright Spots: San Diego County

-  Our pediatricians and community partners are motivated to refer because their children and their families get the treatment services that they need
-  Care coordination and systems coordination is critical to our success



Thanh Do, PhD

Deputy Chief of Community Health, Wellness and Learning

FIRST 5 Santa Clara County



Planning: Santa Clara County

2006

- FIRST 5 Santa Clara County (FIRST 5) and County Behavioral Health Services Department (BHSD) partner to provide screening, assessment and early intervention services (KidConnections Network) to children birth through age 5 and their families; executive sponsorship, common vision, braided and leveraged funding; collaborative design; geographically selected community based providers; and joint oversight and evaluation

2013

- Santa Clara County Board of Supervisors launches the Universal Developmental Screening Initiative Pilot Program, in partnership with FIRST 5 and BHSD, at four Valley Health Center clinics and four community-based pediatric health clinics.

2015

- FIRST 5 and Public Health Department launch Universal Prenatal Substance Use and Behavioral Health Screening Pilot Program, as a complement to the Universal Developmental Screening Initiative.
- FIRST 5 receives designation as a Help Me Grow California County Affiliate.

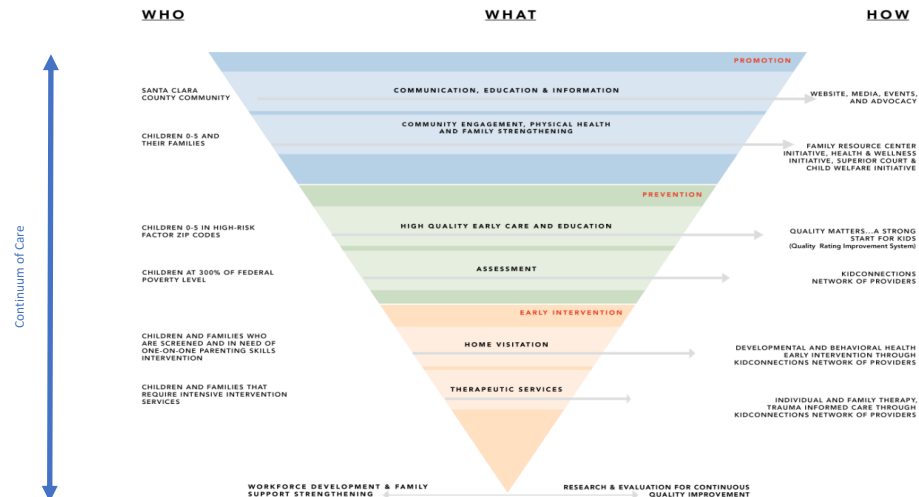
2019

- Today, the linked Universal Development Screening and KidConnections initiatives are poised to establish an integrated information, referral, and early intervention system (Help Me Grow/KidConnections) that connects families with young children to community-based services that support children's optimal health, development, and school success.



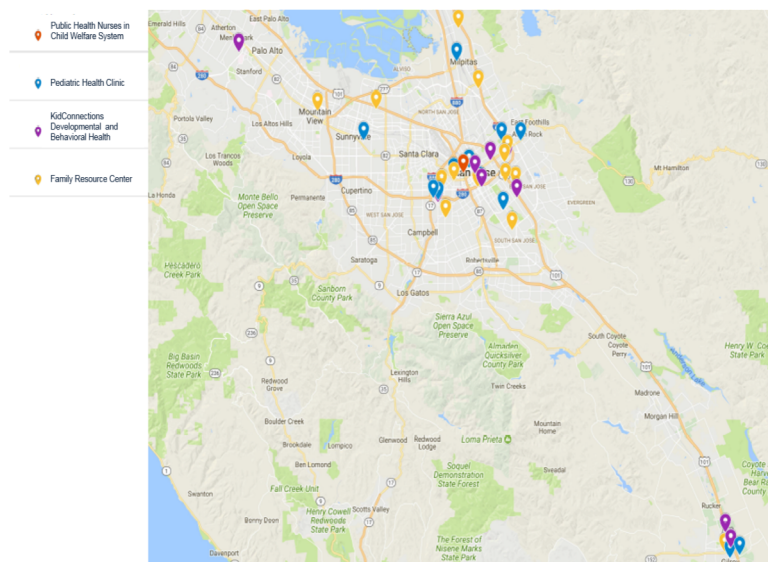
Planning: Santa Clara County

FIRST 5 Service Delivery System/Continuum of Care



Help Me Grow
Inland Empire

Partnerships: Santa Clara County



Backbone Entities

- FIRST 5 Santa Clara County
- Behavioral Health Services Department

Core Partners

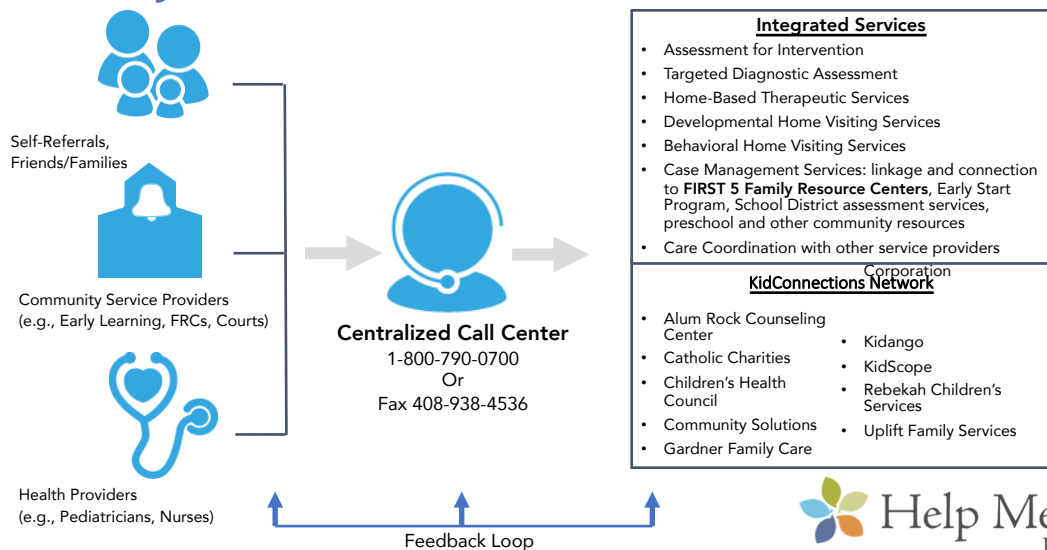
- Health and Hospital System
- Behavioral Health Services Department
- Public Health Department
- Valley Medical Center
- Gardner Health Services
- QUALITY MATTERS early learning sites
- Office of Education
- FIRST 5 Family Resource Centers
- KidConnections Network of Providers
- Superior Court
- Social Services Agency
- Probation Department

Help Me Grow
Inland Empire

Help Me Grow/KidConnections Model



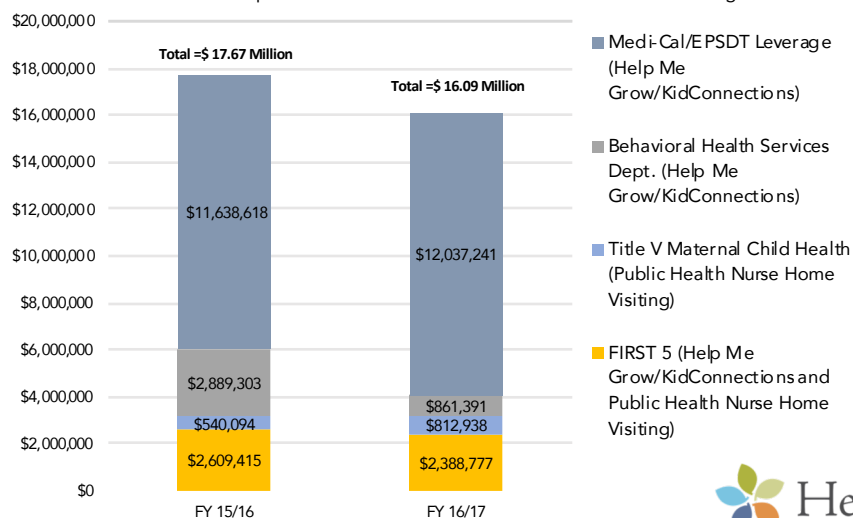
Santa Clara County Help Me Grow/KidConnections System of Care



Help Me Grow
Inland Empire

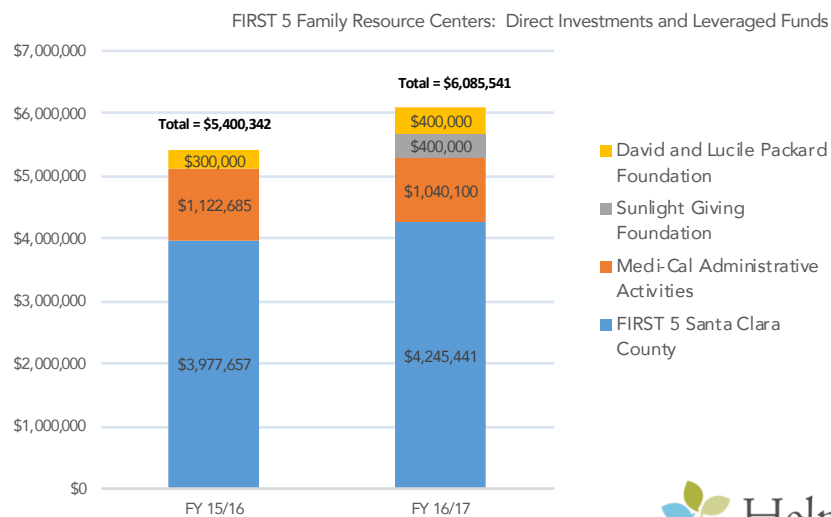
Funding: Santa Clara County

Help Me Grow/KidConnections: Direct Investments and Leveraged Funds



Help Me Grow
Inland Empire

Funding: Santa Clara County



Bright Spots: Santa Clara County

Universal Developmental Screening Initiative

- **Policy:**
 - 2013: Santa Clara County Board of Supervisors asked that pediatric health clinics perform routine developmental screenings with a standardized screening tool (i.e., Ages and Stages Questionnaires) for all children according to the American Academy of Pediatrics' guidelines.
- **Partnerships:**
 - 2013: FIRST 5, Santa Clara County Board of Supervisors, Valley Health and Hospital System (Valley Medical Center, Behavioral Health Services Department, Public Health Department) and other partners launch the Universal Developmental Screening Initiative
 - 2015: FIRST 5 and Public Health Department launch the Universal Prenatal Substance Use and Behavioral Health Screening Pilot Program to support healthy child development during pregnancy, utilizing the evidence-based 4Ps Plus screening tool, in obstetric/gynecological clinics.
- **Sustainability/Scaling:**
 - Santa Clara Valley Health and Hospital System committed to provide on-going county funding to sustain a team of 7 Licensed Vocational Nurses/Medical Assistants to serve as Developmental Screeners in all county-operated pediatric clinics.
 - With FIRST 5's investment as a match, the Public Health Nursing Home Visiting Program is able to leverage Title V Maternal and Child Health Services Block Grant to leverage 4 PHN positions for the 3 PHNs funded through FIRST 5 for a total of 7 PHNs to sustain Universal Prenatal Substance Use and Behavioral Health Screening with connection to early intervention services.
 - Help Me Grow/KidConnections early intervention system leverages approximately \$12 Million per year from Medi-Cal/Early and Periodic Screening, Diagnostic and Treatment (EPSDT) benefit to sustain its services.
 - FIRST 5 staff and partners leverage approximately \$1 Million per year from Medi-Cal Administrative Activities to sustain FIRST 5 Family Resource Centers and other FIRST 5 services.



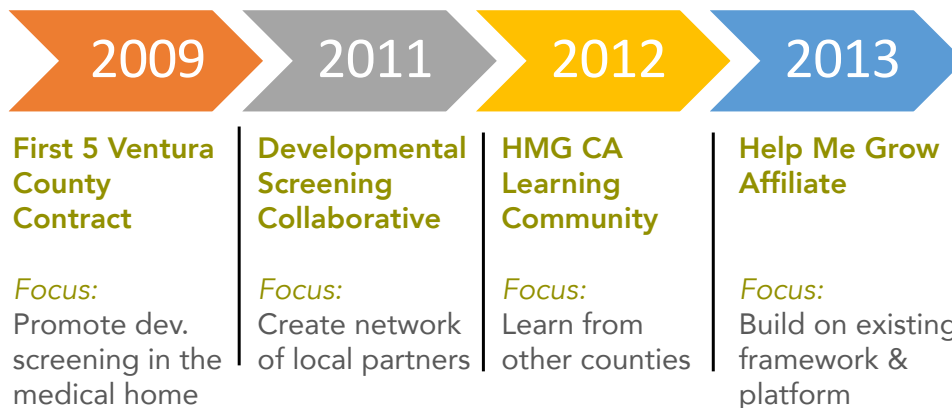


Sharon Elmensdorp, PhD, BCBA-D

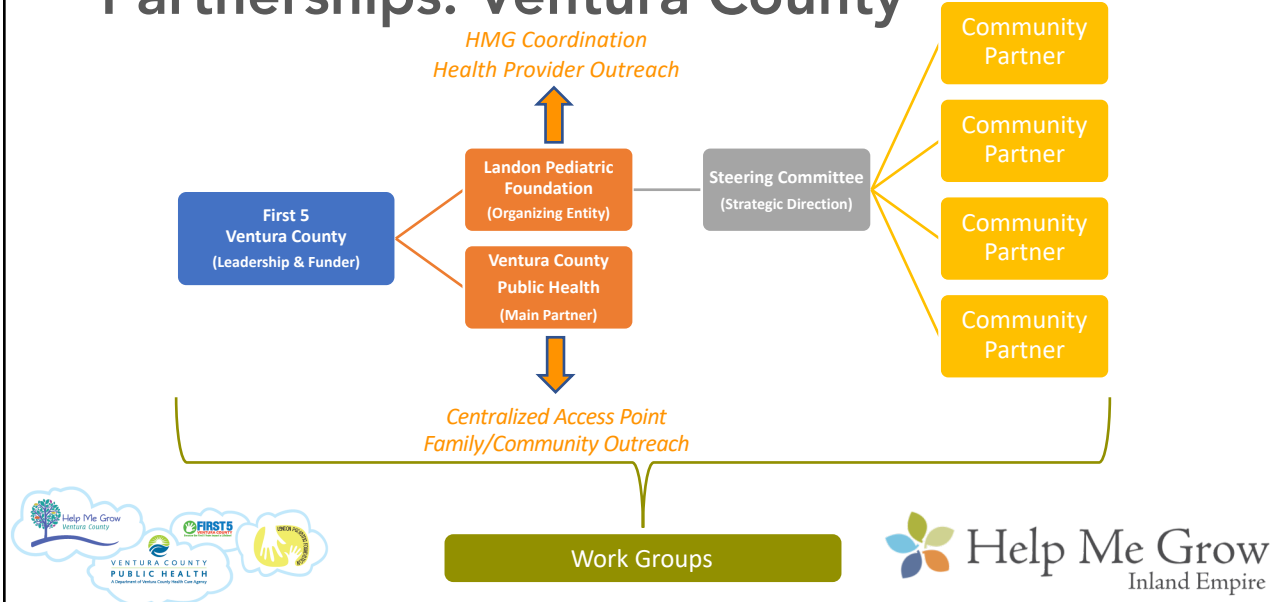
Developmental Specialist,
Landon Pediatric Foundation/
Help Me Grow Ventura County



Planning: Ventura County

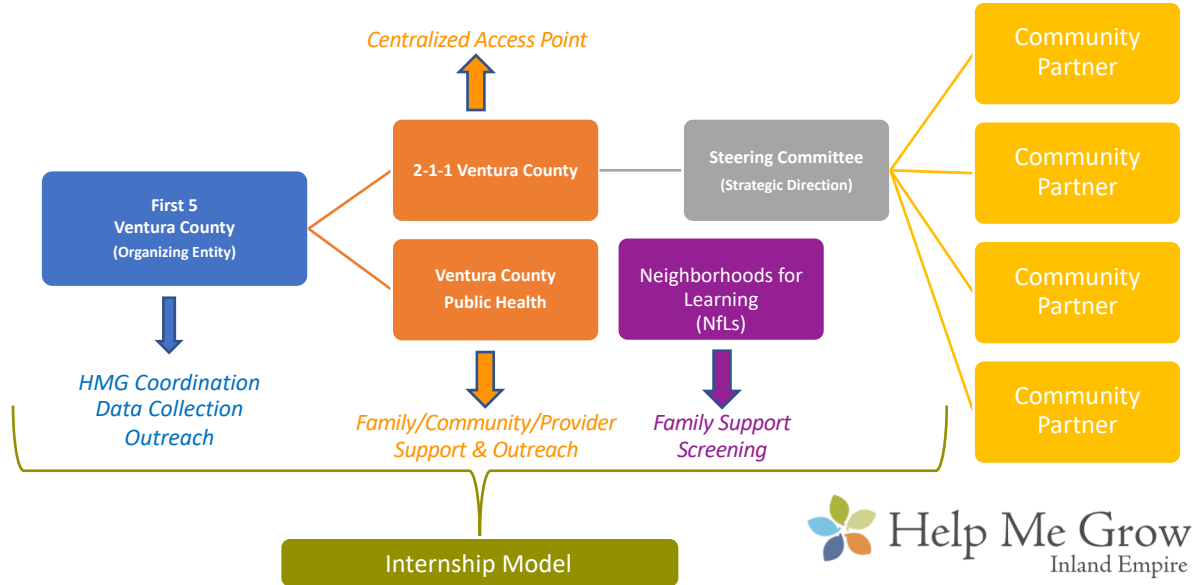


Partnerships: Ventura County






- 2-1-1 Ventura County
- Child Development Resources (Head Start)
- Gold Coast Health Plan (Managed Care Plan)
- First 5 Neighborhoods for Learning (NfLs)
- Medical clinics/practices
- Oxnard School District
- Rainbow Connection Family Resource Center
- Tri-Counties Regional Center
- Early Start*
 - United Parents
 - VC Behavioral Health
 - VC Health Care Agency
 - VC Office of Education
- Early Childhood Programs*
 - VC Public Health
- Adolescent Family Life*
- Public Health Nurses*
- WIC*
- VC SELPA

Future Partnerships: Ventura County



Funding: Ventura County

-  Funded by First 5 Ventura County
-  Leveraged/matched funding through Ventura County Public Health (i.e. MCAH)
-  In-kind



- Replicated by First 5 SLO





Mining the California Help Me Grow Experience Q&A

Juliana Sanchez, HMG Community Liaison, First 5 Alameda County

Kristina Hernandez, Program Coordinator, Early Intervention Help Me Grow, Office of Fresno County Superintendent of Schools

Tara Ficek, Director of Health Systems, First 5 LA

Pradeep Gidwani, MD, MPH, Medical Director of HDS and First Steps, American Academy of Pediatrics, California Chapter 3

Crystal Nava, Developmental and Behavioral Health Director, FIRST 5 Santa Clara County

Jennifer Pham, LCSW, Early Childhood Mental Health Program Manager and Interim Senior Mental Health Program Manager, Santa Clara County Behavioral Health Services Family & Children's Division

Sharon Elmensdorp, PhD, BCBA-D, Developmental Specialist, Landon Pediatric Foundation/Help Me Grow Ventura County

Targeted Discussions: Designing Help Me Grow Inland Empire

Community & Family Outreach
Child Health Provider Engagement
Referrals & Service Linkages
Financing & Partnership

 **Help Me Grow**
Inland Empire

Capturing the Vision

Help Me Grow Inland Empire




It's 5 years in the future.
What has made Help Me Grow Inland Empire a
success?




What comes next?



What's Next?

 Continued community engagement in the planning process:
Next Summit is March 20!

 Workgroup involvement:

- Community & Family Outreach
- Health Provider Outreach
- Systems & Sustainability

 What is your role in Help Me Grow Inland Empire?





Thank you!

 Help Me Grow
Inland Empire